

HIGH EFFICIENCY EVAPORATIVE AIR COOLING

8", 12" or 4x4 Rigid Media Models provide reliable and efficient evaporative air cooling for your home.

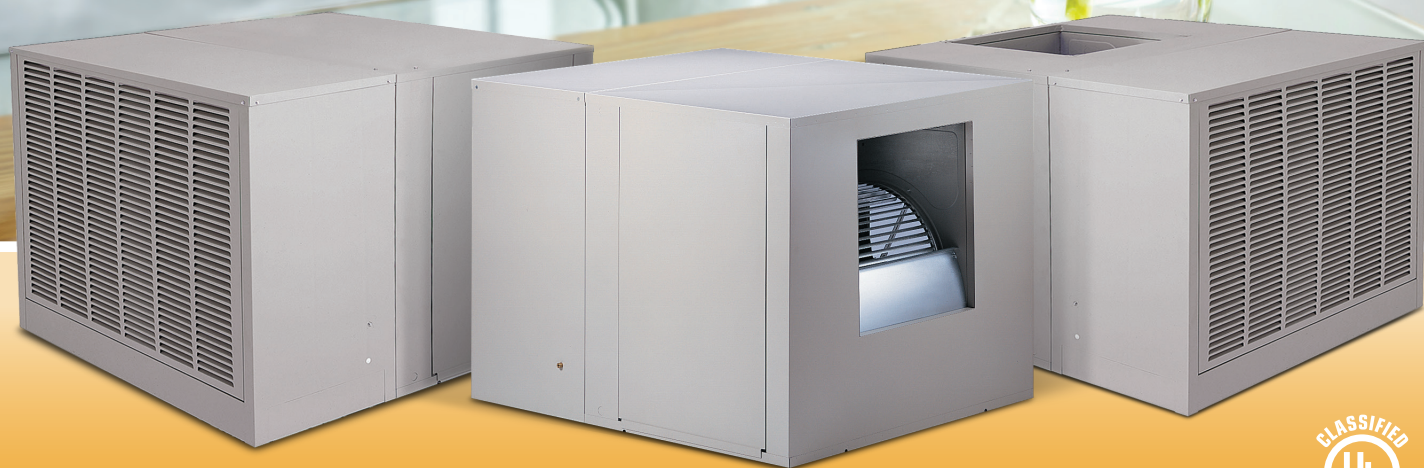
Air + Water

ENERGY EFFICIENT EVAPORATIVE COOLING

ENVIRONMENTALLY FRIENDLY

The simple concept of mixing air and water produces powerful, energy efficient cooling that is both economical and environmentally friendly.

The AeroCool®, AeroCool® Pro, & AeroCool® Pro-V Series combines worry-free operation and low maintenance with industry leading advancements and reliability.



U.L. Listed Models
also available

AEROCOOL®

AeroCool Pro Series

PERFORMANCE & CONVENIENCE

Comfort & Efficiency

The AeroCool Pro Series evaporative air cooler, with its integrated systems, work hard to help maintain the performance and efficiency while allowing you more time to - *Live Your Life in Comfort.*

The AeroCool Pro Series features the Pro-4x4 High Efficiency Media to provide the coolest air possible while employing the Pro-Clean System to maintain the entire system.

The Pro-Clean System maintains the cleanliness of your evaporative cooler by automatically draining the cooler and refilling with fresh clean water, thus avoiding scale build-up. The water used in the evaporative process is stored inside the fully encapsulated Pro-Armor wet section.

The AeroCool Pro Series includes the Pro-Shield weatherizing panel for use in the off-season to prohibit heat loss and unwanted air from entering the home during colder months. Defending the media from the elements of winter can also extend the life of your unit.

Set the comfort level for you and your family and the AeroCool Pro Series evaporative air cooler does the rest. Combined with the Pro-Stat programmable thermostat, the AeroCool Pro Series will automatically and efficiently operate the equipment to best maintain your comfort level while using the least amount of energy.



PRO SERIES COOLERS INCLUDE:

- 4x4 High Efficiency long life rigid type pad material providing superior performance
- Installed 2 Speed Motor with 3 Year Warranty
- Thermostat
- Pro-Clean
- Quick Disconnect
- Completely Wired



U.L. Listed Models
also available



SIDE DRAFT



DOWN DRAFT



AeroCool Series

AEROCOOL
Your Family Deserves it.

Versatility Reliability & Comfort

LONGEVITY AND LOW MAINTENANCE

Utilizing single inlet design, AeroCool provides the ultimate protection available for the longevity of your cooler. Fully lined in a tough plastic shield, the all-metal construction of the wet module is protected from the damaging effects of typical deposits found in most water systems. High efficiency evaporative cooling, low

maintenance, and long life of AeroCool makes these coolers your award winner.

Responding to your specific requirements, these units are available in three models: down, side, and up discharge for concealed ground level applications.



DOWN DRAFT
(TD/HD Model)



SIDE DRAFT
(TH/HH Model)



UP DRAFT
(TUP/HUP Model)

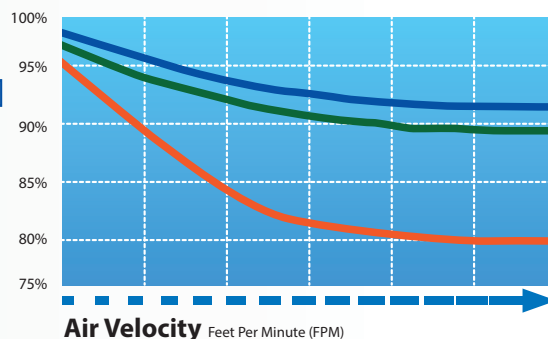
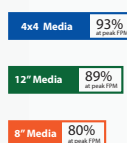
CHOOSING THE RIGHT MODEL TO MEET YOUR NEEDS

Choosing the right AeroCool Series model is important for proper operation. All AeroCool air coolers use efficient Rigid Media and are available in three levels of cooling efficiency.

AeroCool Series coolers are designed to operate at maximum efficiency with minimal maintenance. The Rigid Media gives the ability to deliver colder air while reducing the time spent replacing standard aspen media.

For maximum performance, choose the model with the proper rating and motor as well as the correct duct configuration. Ask your qualified contractor to help you choose the correct AeroCool model that best fits your home and your needs.

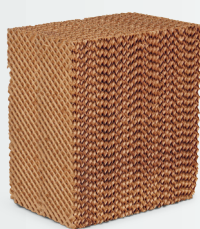
Cooling Efficiency



GOOD

8" Rigid Media

- Economical choice
- Lower Replacement Cost



BETTER

12" Rigid Media

- Ultra efficient
- More surface area for better cooling



BEST

4x4 Rigid Media

- Offers the best cooling efficiency
- Uses High-density media
- Pro Series Models

8" STANDARD RIGID MEDIA

The 8" media is a good economical choice for high efficiency cooling. It provides increased cooling performance over traditional aspen media pads and has 80% saturation efficiency.

12" STANDARD RIGID MEDIA

The ultra-efficient 12" media is better choice where maximum cooling efficiency is required. This thickness of media provides 89% saturation efficiency.

4X4 HI EFFICIENCY RIGID MEDIA FOR PRO SERIES

The 4x4 Hi Efficiency Rigid Media is an 8" blend of high density media combined with standard density media. This blend will offer up to 93% saturation efficiency. The result is a highly efficient rigid media that delivers colder air than any other home comfort evaporative cooler sold today.

AEROCOOL FEATURES COMPARISON	AEROCOOL SERIES	PRO SERIES
1. Reliable Low Sump Pump	•	•
2. Pro-Armor Wet Section Liner	•	•
3. Flomate Water Distribution System	•	•
4. Easy Access Gravity Held Doors	•	•
5. Peblar XT Protection	•	•
6. MICROSCOPIC™ Blower Shaft Finishing	•	•
7. Pro-Shield Winterizing Panel	Optional	•
8. 8" & 12" Standard Rigid Media	•	
9. 4x4 Hi-Efficiency Media		•
10. Pro-Clean System		•
11. Factory Installed 2 Speed Motor with 3 Year Warranty		•
12. Pro Thermostat		•

1 RELIABLE LOW SUMP PUMP

The most powerful pump on the market today.



2 PRO-ARMOR WET SECTION LINER

The polymeric inner structure completely shields the wet section from corrosive interaction, providing long life and worry free operation.

3 FLOMATE

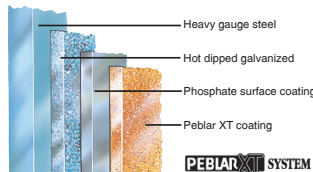
Flomate-quality water distribution system improves wet out for more efficiency.

4 EASY ACCESS GRAVITY-HELD DOORS

Easy to remove access doors reduce maintenance time.

5 PEBLAR XT PROTECTIVE BAKED ON POWDER COAT

Our exclusive Peblar XT surface preparation is the highest quality architectural grade finish used in the industry. This durable, multi-layer bonded treatment protects your cooler against corrosion and assures years of reliable service.



6 MICROSCOPIC™ BLOWER SHAFT FINISHING

A PMI Exclusive, this polishing process for the blower shaft yields a 90% improvement over standard "ground finishes" and allows the bearing to spin on a smooth surface. This means quieter operation and longer bearing life for your cooler.



7 PRO-SHIELD

This weatherizing panel prohibits outward heat loss and cold air from entering into your home during the off-season. Easy to install, media protection is also afforded thereby increasing the life of the unit.

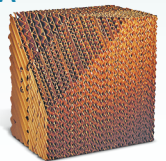


8 8" & 12" STANDARD RIGID MEDIA

The AeroCool® evaporative cooler beats the others cold — It's more efficient and less costly to operate. In fact, it is up to 13% more efficient than conventional coolers. Rigid media material provides cooler air and can last up to 10 times longer than old style aspen pads.

9 PRO SERIES 4X4 HI-EFFICIENCY MEDIA

Because this blend of media has a 93% saturation efficiency our 4x4 Pro & Pro-V Series Coolers can deliver colder air than any other home comfort evaporative cooler.



10 PRO-CLEAN SYSTEM

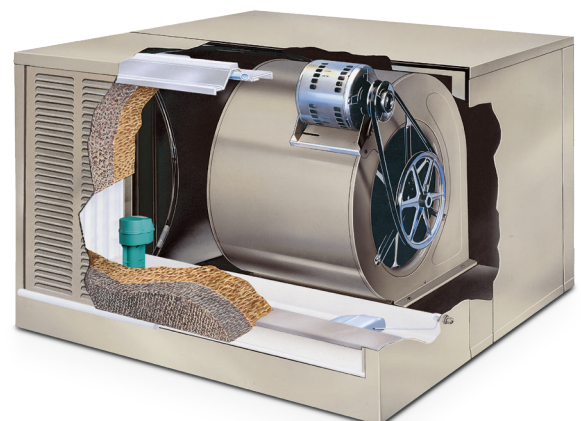
Drains and washes the unit daily and can save as much as 3,000 gallons of water a month as compared to standard bleed-off system.

11 PRO SERIES FACTORY INSTALLED 2 SPEED MOTOR

All components are completely pre-wired by the factory, thus reducing installation time and increasing reliability.

12 PRO THERMOSTAT

The cooler's "brain" saves money by giving just the right amount of cool all the time. The new "Softspeed Transition" feature creates smoother operation when the motor automatically changes speed.



Engineering Data																		
AeroCool Series																		
Media Type	Model Number	Cabinet			Duct Opening		Down	Side			Water Inlet		Drain				Ship Weight	Oper. Weight
		H	W	D	A	B	C	K	E	F	G	J	M	O	P	S		
8" Media	TD3800C	25 5/8	33 1/8	42 5/8	16	16	7 7/8		17	26	4 3/8	13 1/2	13 1/2	5 1/2	7 7/8	8 1/2	115	130
	TH3800C	25 5/8	33 1/8	42 5/8	16	16		1 7/8	17	26	4 3/8	13 1/2	13 1/2	5 1/2	7 7/8	8 1/2	115	130
	TD4801C	27 5/16	42	43	17 3/4	17 3/4	6 3/4		17	26	5 1/2	13 1/2	13 1/4	13	1 1/2	12 1/8	161	189
	TH4801C	27 5/16	42	43	17 3/4	17 3/4		8	17	26	5 1/2	13 1/2	13 1/4	13	1 1/2	12 1/8	161	189
	TH6801C	34 5/16	42	45	19 3/4	19 3/4		11 5/16	17	28	5 1/2	13 1/2	13 1/4	13	3 1/4	11 1/8	198	220
	TD6801C	34 5/16	42	45	19 3/4	19 3/4	6 3/4		17	28	5 1/2	13 1/2	13 1/4	13	1 1/2	11 1/8	198	220
	TUP6801C	34 5/16	42	45	19 3/4	19 3/4		11 5/16	17	28	5 1/2	13 1/2	13 1/4	13	1 1/2	11 1/8	198	220
12" Media	TD4812C	27 5/16	42	47	17 3/4	17 3/4	6 3/4		21	26	5 1/2	17 1/2	17 1/4	13	1 1/2	12 1/8	177	212
	TH4812C	27 5/16	42	47	17 3/4	17 3/4		8	21	26	5 1/2	17 1/2	17 1/4	13	1 1/2	12 1/8	177	212
	TH6812C	34 5/16	42	49	19 3/4	19 3/4		11 5/16	21	28	5 1/2	17 1/2	17 1/4	13	3 1/4	11 1/8	214	257
	TD6812C	34 5/16	42	49	19 3/4	19 3/4	6 3/4		21	28	5 1/2	17 1/2	17 1/4	13	1 1/2	11 1/8	214	257
	TUP6812C	34 5/16	42	49	19 3/4	19 3/4		11 5/16	21	28	5 1/2	17 1/2	17 1/4	13	1 1/2	11 1/8	214	257

AeroCool Pro Series																						
Media Type	Model Number	Cabinet			Duct Opening											Blower Wheel		Shaft Dia.	Belt Length	Pully OD	Ship Weight	Oper. Weight
		H	W	D	A	B										Dia	Width					
4x4 Media	PD4802	27 5/16	42	43	17 3/4	17 3/4	17	26	5 1/2	23	13 1/2	13 1/4	13	1 1/2	12 1/8	16	16	1	54	10	177	195
	PH4802	27 5/16	42	43	17 3/4	17 3/4	17	26	5 1/2	23	13 1/2	13 1/4	13	1 1/2	12 1/8	16	16	1	55	10	179	197
	PD6802	34 5/16	42	45	19 3/4	19 3/4	17	28	5 1/2	25	13 1/2	13 1/4	13	1 1/2	11 1/8	19	18	1	62	12	217	232
	PH6802	34 5/16	42	45	19 3/4	19 3/4	17	28	5 1/2	25	13 1/2	13 1/4	13	3 5/16	11 1/8	19	18	1	65	12	217	232


Specifications

*All Models Include 120 V. Pumps. Motors Ship Separately

AeroCool Series													
Media Type	Model Number	Indus. STD Rating*	Air Delivery CFM (Cubic Feet Per Minute)						Electrical Specifications				
			0.0"	0.1"	0.2"	0.3"	0.4"	0.5"	HP	Speed	Volts	Amps	
8" Media	TD/TH 3800C	3800	2021	1939	1879	1711	1509	1203	1/3	2	120	7.4	
	TD/TH 4801C	4400	3329	3035	2816	2623	2429	2235	1/2	2	120/240	9.0/5.3	
	TD/TH 4801C	4800	3875	3619	3440	3286	3132	2978	3/4	2	120/240	11.5/6.0	
	TD/TH/TUP 6801C	5800	4250	4125	4000	3850	3650	3425	3/4	2	120/240	11.5/6.0	
	TD/TH/TUP 6801C	6800	4750	4600	4475	4375	4250	4050	1	2	120/240	13.3/6.9	
12" Media	TD/TH 4812C	4400	2860	2790	2645	2350	2030	1890	1/2	2	120/240	9.9/5.9	
	TD/TH 4812C	4800	3270	3220	3190	2940	2650	2350	3/4	2	120/240	12.4/6.6	
	TD/TH/TUP 6812C	5800	4130	4000	3820	3630	3375	2740	3/4	2	120/240	12.4/6.6	
	TD/TH/TUP 6812C	6800	4551	4440	4300	4080	3940	3680	1	2	120/240	14.2/7.6	

AeroCool Pro Series													
4x4 Media	PD4802	4800	3450	3200	3050	2950	2500	2310	3/4	2	120	11.9	
	PH4802										120		
	PD6802	6800	4430	4310	4135	3990	3695	3460	1	2	120	14.1	
	PH6802										120		

* Industry Standard Rating represents a numeric index for use in comparing units of different manufacturers.



WARNING: This product can expose you to chemicals including Lead, which is known to the State of California to cause cancer and birth defects or other reproductive harm. For more information go to www.P65Warnings.ca.gov

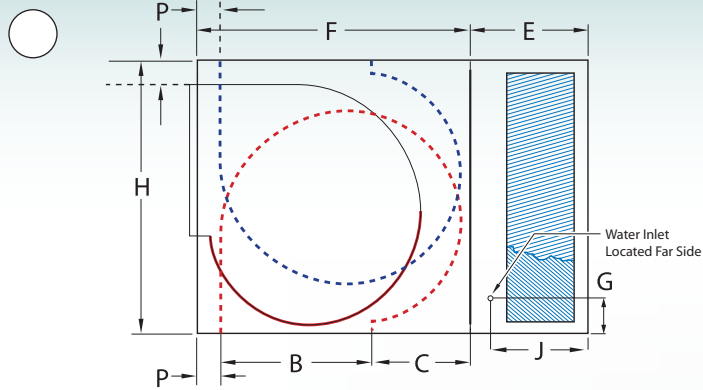
AEROCOOL® Evaporative Coolers and components are designed and tested in accordance with one or more of the following standards or agencies. AIR DELIVERY - data published derived from tests conducted in accordance with A.M.C.A. (Air Movement and Control Assoc.) standard 210. EVAPORATIVE MEDIA - Specially Corrugated Cellulose Materials, impregnated with insoluble antirot salts and regidifying saturants. SEALANT - water immersion per ASTM D870. FLEXIBILITY - per ASTM D756. CORROSION RESISTANCE - per ASTM B117. PENCIL HARDNESS - per ASTM D3363. IMPACT RESISTANCE - per D2794. FLEXIBILITY - per ASTM D522. SURFACE BURNING CHARACTERISTICS of building materials (best rating) per UL 723 and ASTM E-84. PUMPS recognized under UL standard #778 for operating water pumps with thermal overload and locked rotor protection. POLYMERIC MATERIALS listed in accordance with UL 94 and 746C. MOTORS recognized under UL component standard #1004 for motor certification. MOTORS tested under UL s/b 507 for locked rotor and heat rise protection.

Phoenix Manufacturing, Inc. produces this equipment, with pride and craftsmanship, in the U.S.A. As a leader in our country's evaporative cooler industry, we continuously strive to offer product improvements and reserve the right to change specifications and designs without notice.

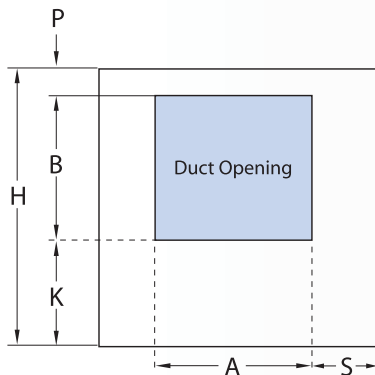
When specifying or ordering U.L. Listed models, add a “U” prefix to the front of the appropriate model number. In order to maintain this U.L. designation, these models must be used in conjunction with PMI supplied motor kits and pumps.

Example: UPD4802

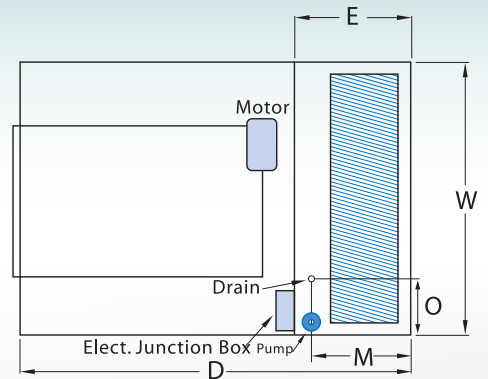
AeroCool Series



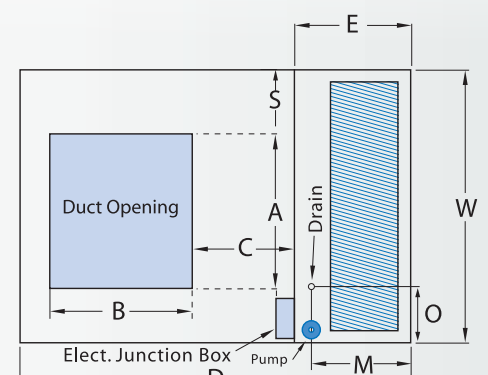
Side View



End View



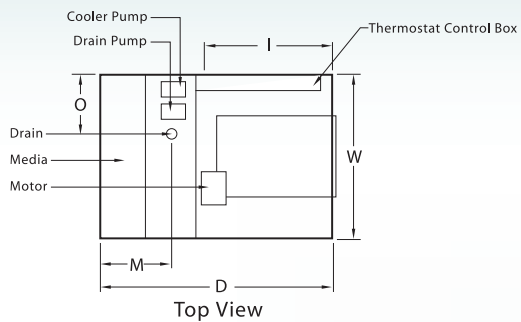
Top View



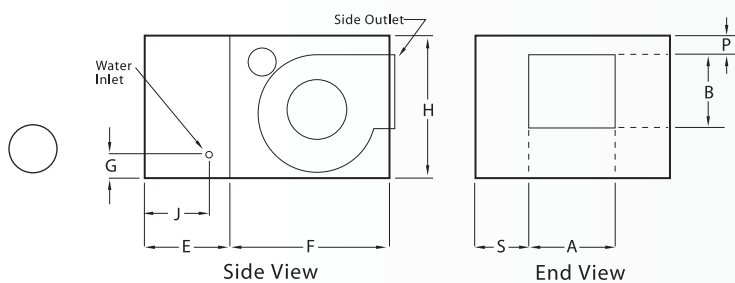
Top View (updraft)

AeroCool Pro & Pro-V Series

SIDE DISCHARGE



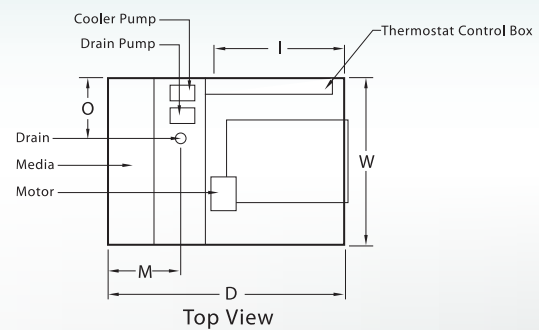
Top View



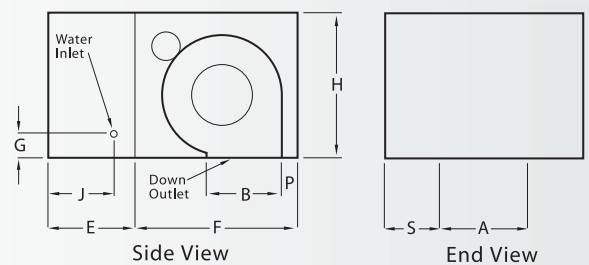
Side View

End View

DOWN DISCHARGE



Top View



Side View

End View



AEROCOOL®

Your Family Deserves it.

PHOENIX MANUFACTURING INC.
3655 East Roeser Road
Phoenix, Arizona 85040

Phone: 602-437-1034
Fax: 602-437-4833
PhoenixManufacturing.com

ACRES_18_V02
MADE IN U.S.A.